

## Supplement I.B: Installing and Configuring JDK 1.5

For Introduction to Java Programming

By Y. Daniel Liang

This supplement covers the following topics:

- Downloading JDK 1.5
- Installing JDK 1.5
- Configuring JDK
- Verifying Configurations

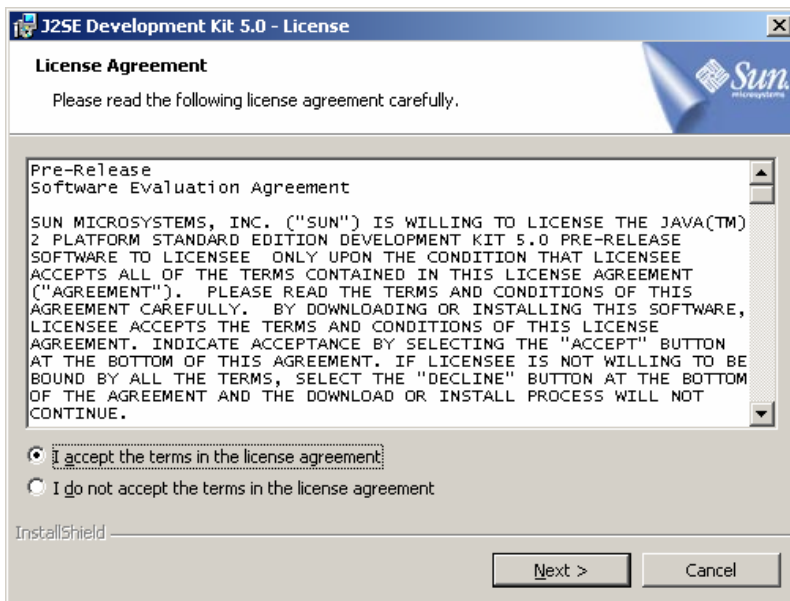
### 1.1 Downloading JDK 1.5

You can download JDK 1.5 from <http://java.sun.com/j2se/1.5.0/download.jsp>. The Windows version of JDK download file is named `jdk-1_5_0-windows-i586.exe`. (Note: new versions or updates may be available. If you download a new version or an update version, the file name may be slightly different from `jdk-1_5_0-windows-i586.exe`.)

### 1.2 Installing JDK 1.5 on Windows

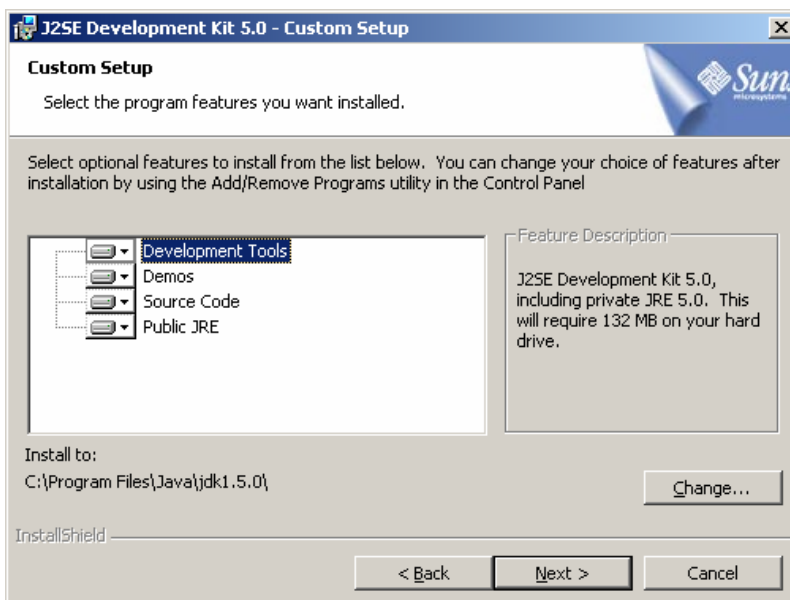
Follow the steps below to install JDK 1.5:

1. Double click `jdk-1_5_0-windows-i586.exe` to run the installation program. You will see the JDK License dialog displayed, as shown in Figure 1.
2. Check the radio button to accept the license agreement and click Next to display the JDK Custom Setup dialog, as shown in Figure 2.
3. You may install JDK in a custom directory. For simplicity, don't change the directory. Click Next to install JDK. After a while, the JRE Custom Setup dialog is displayed in Figure 3.
4. You may install JRE in a custom directory. For simplicity, don't change the directory. Click Next to display the Browser Registration dialog is displayed in Figure 4. Make sure the browser(s) are selected. This will enable your browser to run Java applets. Click Next to continue.
5. After installation completed, the Complete dialog is displayed in Figure 5. Click Finish to close the dialog.



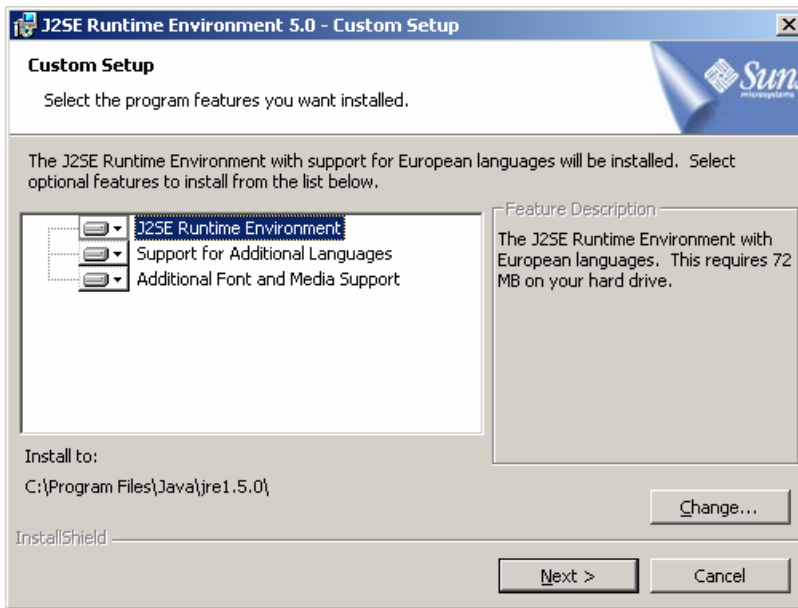
**Figure 1**

*You have to accept the license in order to install JDK 1.5.*



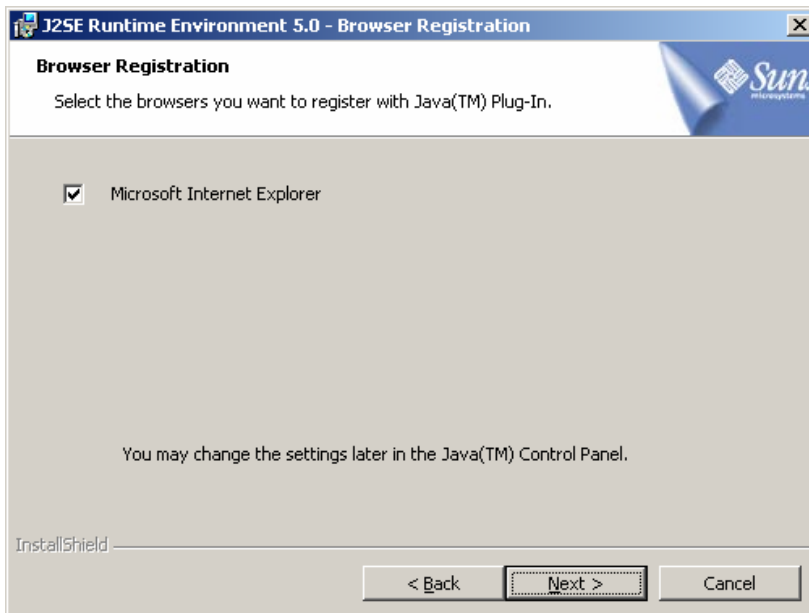
**Figure 2**

*The JDK Custom Setup dialog enables you to choose a custom directory for JDK files.*



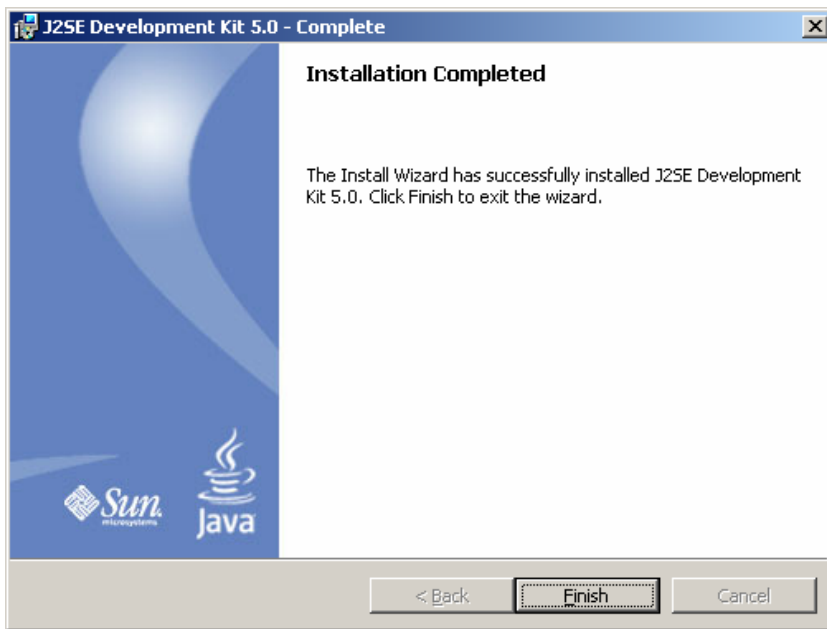
**Figure 3**

*The JRE Custom Setup dialog enables you to choose a custom directory for JRE files.*



**Figure 4**

*The Browser Registration dialog registers browsers with the JRE.*



**Figure 5**

*The Complete dialog indicates a successful installation.*

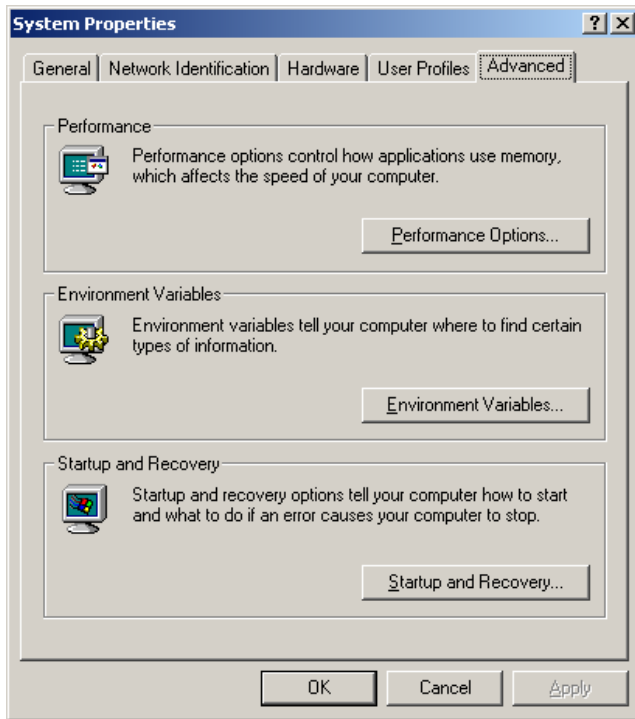
### **1.3 Configuring JDK 1.5 on Windows**

To figure JDK is to make it available in the operating system so that Windows can find your JDK commands such as `javac`.

#### **1.3.1 Configuring JDK on Windows NT, 2000, XP, and ME**

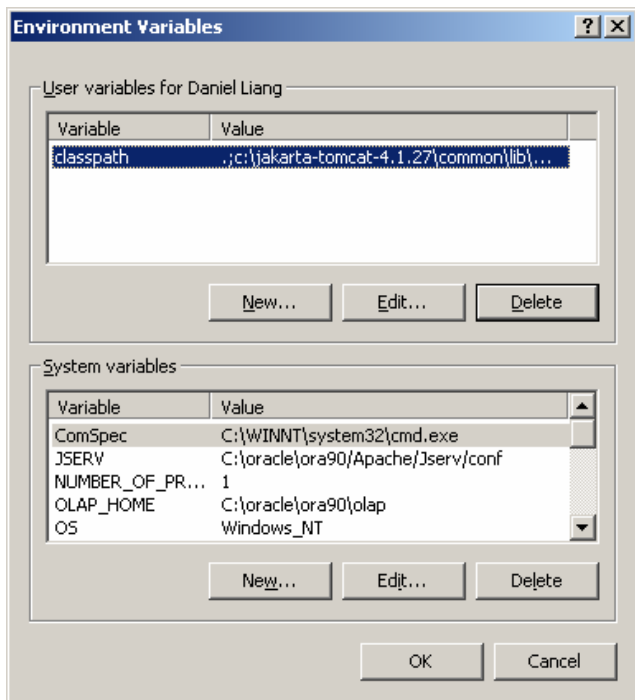
To configure JDK on Windows NT, 2000, ME, and XP, set the environment variables as follows:

1. Right click on the My Computer icon on your desktop to display a context menu. Choose Properties from the context menu to open the System Properties window, as shown in Figure 6. (This screen shot is taken from Windows 2000. For Windows NT, XP, and ME users, the System properties window may look slightly different.)
2. In the System properties window, click *Environment Variables* in the Advanced tab to display the Environment Variables window, as shown in Figure 7.



**Figure 6**

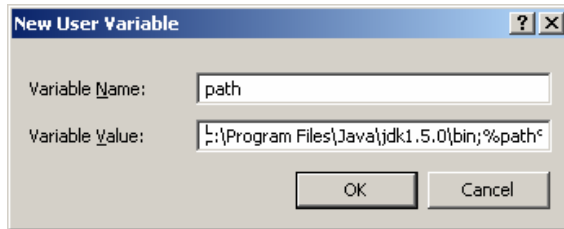
*The System Properties window contains system information.*



**Figure 7**

*The Environment Variables window enables you to set user and system variables.*

3. You can set or modify user variables or systems variables. User variables affect the individual users and system variables affect all the users in the system. In the User variables section, select PATH and click *Edit* if PATH is already a user variable. Otherwise, click *New* to display the New User Variable window as shown in Figure 8.



**Figure 8**

*The New User Variable enables you to set a new user variable and its value.*

4. Type PATH in the Variable field and c:\Program Files\Java\jdk1.5.0\bin;%path% in the Variable Value field, as shown in Figure 4. Click OK.

NOTE: You don't have to reboot the computer, but you have to open a new command window to use JDK commands.

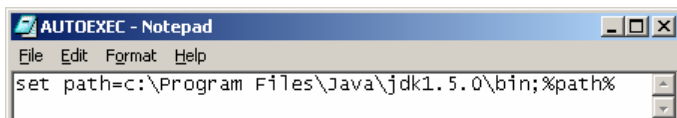
NOTE: If you download a new version or an update version, the directory name **jdk1.5.0** may be slightly different. For example, the directory name is **jdk1.5.0\_04** for JDK 1.5 Update 4.

### **1.3.2 Configuring JDK on Windows 95 and 98**

To configure JDK on Windows 95 and 98, update the autoexec.bat file as follows:

1. Open a Windows command prompt window and type **notepad autoexec.bat** from the C:\ prompt to display the Notepad window.
2. Type the following line in the Notepad window, as shown in Figure 9.

```
set path=c:\Program Files\Java\jdk1.5.0\bin;%path%
```



**Figure 9**

The **javac** command is not found if JDK is not properly configured.

3. Choose *File, Save* in the Notepad window to save the file and close the Notepad window.
4. autoexec.bat file is executed every time you start your computer. Reboot your system to have the new configurations to take effect.

### 1.3.3 The *classpath* Environment Variable

You don't need to set classpath unless you need to add new packages. Packages are introduced in Chapter 4 in Introduction to Java Programming, 5E.

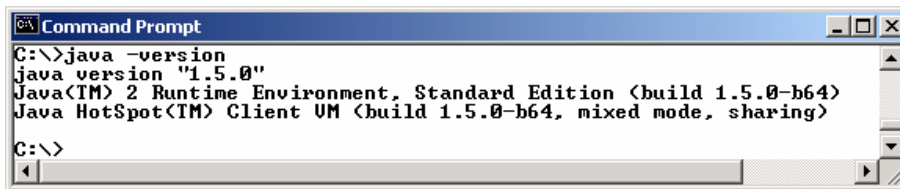
A package corresponds to a directory in Java. To add a package to classpath is to add its corresponding directory to the path. The command to add a directory is

```
set classpath=.;%classpath%;new-directory
```

The `.` symbol indicates the current directory. The current directory is not a specific directory. It is the directory in which you are current located. `%classpath%` represents the existing classpath. The current directory, the existing classpath, and the new-directory are all set in the new classpath. You don't set a classpath explicitly; the current directory is in the classpath.

### 1.4 Verifying Configurations

To verify whether JDK 1.5 is configured correctly, type **java -version** from the command prompt, as shown in Figure 10.



**Figure 10**

The **javac** command is not found if JDK is not properly configured.